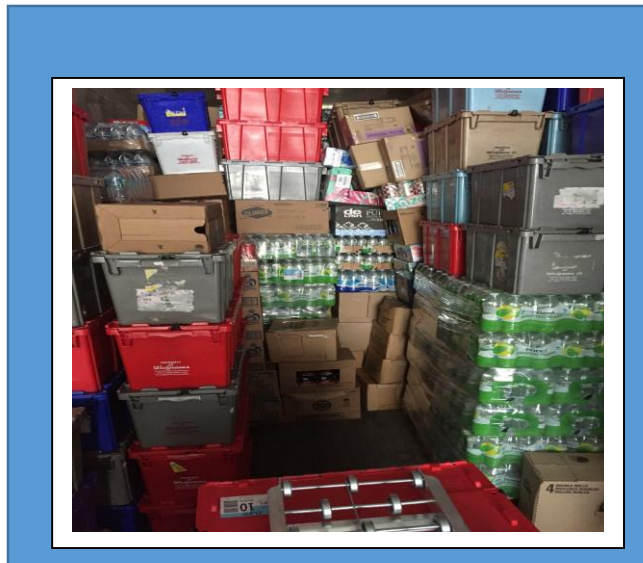




Opening Trailer Door, Down Stack Freight Often!

Incidents:

1. Shrink wrapped freight on a dolly was secured by a load bar. The load bar became unsecure, when the driver opened the trailer door, he did not notice that the load bar was now standing against the trailer door. The bar fell out of the trailer, striking the employee on the top of the head. Severe laceration occurred, requiring eight staples.
2. Driver sustained a lost time injury.



CPC FACT ANALYSIS &/OR CORRECTIVE ACTION PLAN

- Focus:** When opening the trailer door, product or objects may fall out of the trailer. Focus on the stacked product location and quality of the stack. Will the column of cases or totes collapse?
- Anticipate:** When opening the trailer door objects may fall out. Inside the trailer, freight may collapse at any moment.
- Correct:** Down stack product often, especially unstable columns. When handling elevated freight, always tilt box or tote away from your face / head. Keep the area around your feet free of any loose freight. Leave yourself an out.
- Talk:** Communicate with your managers and the transportation department any suggestions you may have to prevent injuries.